

PHONE : +94 -11- 2264203 FAX : +94 -11- 2259916 AFS : VCBIHYX VCCYAYX E-mail : aishq@airport.lk ddgasr@caa.lk	DEMOCRATIC SOCIALIST REPUBLIC OF SRI LANKA AERONAUTICAL INFORMATION SERVICES (AIS/HQ) AIRPORT & AVIATION SERVICES (S.L) LTD BANDARANAIKE INTERNATONAL AIRPORT COLOMBO KATUNAYAKE SRI LANKA.	AIP SUPPLEMENT 01/19 19 APRIL 19
--	--	---

AD

PARTIAL TAXIWAY CLOSURE AT BANDARANAIKE INTERNATIONAL AIRPORT COLOMBO (VCBI)

(Effective Period: From 0430 UTC, 23rd April 2019 to 1800 UTC, 15th October 2019)

1 General

- 1.1 The purpose of this AIP Supplement is to inform all concerned, the closure of Portion of Parallel Taxiway and Taxiway E during the construction work of Phase ii Stage 2 development project at Bandaranaike International Airport Colombo(VCBI).
- 1.2 The details of construction area are shown in the appendix A and appendix B.
- 1.3 Whilst no significant constraint is envisaged on the operation of narrow-bodied aircraft, times for this partial closure of Taxiway E and a portion of Parallel Taxiway between Taxiways D and E have been determined so as to mitigate any disruptions to scheduled operation of wide-bodied aircraft types such as B777-300ER, B777-200, A340-600 and A350-900.

2 Time Schedule

- 2.1 Taxiway E and Portion of Parallel Taxiway between entrance to TWY D and entrance to TWY E will be closed from 23rd April 2019 to 15th October 2019 according to the schedules given in following tables 2.1(a) , 2.1(b) and 2.1(c). (All times in UTC).

2.1 (a) For the period from 0430, 23rd April 2019 to 0930, 28th April 2019

Day	Schedule
Monday	Nil
Tuesday	<i>BTN 0430-1000</i>
Wednesday	<i>BTN 0430-1300</i>
Thursday	<i>BTN 0430-1000</i>
Friday	<i>BTN 0430-1000</i>
Saturday	<i>BTN 0430-0930</i>
Sunday	<i>BTN 0430-0930</i>

2.1 (b) For the period from 1330, 29th April 2019 to 1800, 05th May 2019

Day	Schedule
Monday	BTN 1330-1800
Tuesday	BTN 0430-1000 and 1330-1800
Wednesday	BTN 0430-1300
Thursday	BTN 0430-1000 and 1330-1800
Friday	BTN 0430-1000 and 1330-1800
Saturday	BTN 0430-0930 and 1330-1800
Sunday	BTN 0430-0930 and 1330-1800

2.1 (c) For the period from 1330, 06th May 2019 to 1800, 15th October 2019

Day	Schedule 1
Monday	BTN 0000-0300,1330-1800 and 2130-2359
Tuesday	BTN 0000-0300,0430-1000,1330-1800 and 2130-2359
Wednesday	BTN 0000-0230,0430-1300 and 2130-2359
Thursday	BTN 0000-0230,0430-1000,1330-1800 and 2130-2359
Friday	BTN 0000-0230,0430-1000,1330-1800 and 2130-2359
Saturday	BTN 0000-0230,0430-0930,1330-1800 and 2130-2359
Sunday	BTN 0000-0300,0430-0930,1330-1800 and 2130-2359

3 Marking and Lighting of Unusable Areas

- 3.1 TWY markings, TWY Centerline Lights and TWY Edge Lights will be covered within the unusable area and lighted barricades will be placed to indicate the closure of taxiways during the working Hours.

4 Availability of Temporary Runway Turn Pad

- 4.1 A temporary RWY Turn Pad with intersection angle of 45 degrees and steering angle of 55 degrees will be available at RWY 04 threshold to facilitate the aircraft up to code 'E' with following urgency situations.
- Aircraft failing to vacate RWY via TWY 'D' after landing or after aborted/rejected Takeoff on RWY 22.
 - Departing aircraft on RWY 04 to use Turn Pad.
 - Pilot-in-command shall strictly follow ATC Instructions.

5 Safety Precautions

- 5.1 A safety study on possible hazards to aircraft due to the construction activity has been conducted and all possible mitigation measures are in place to ensure the safe operation of aircraft.

6 Emergency

- 6.1 During an eventuality where an abrupt opening of the closed portions of taxiway is required to cater to an urgency/emergency of aircraft that may require full length of runway and parallel taxiway, the contractor will evacuate all the workers and equipment soon after the receipt of instruction from ATC to the effect. Upon the receipt of confirmation from the Contractor that the workers and equipment have been evacuated completely, ATC will issue clearance to such aircraft for the use of full length of runway and parallel taxiway.

7 New Larger Aeroplane Operations

- 7.1 Operation of New Larger Aeroplanes such as A380 and AN225 will not be allowed at VCBI during partial taxiway closure periods.

8 Notification Of Revisions/Updates

- 8.1 Any significant changes /updates to the information published in this supplement will be notified through AIP SUP or NOTAM as appropriate.

9 For Further Information Contact

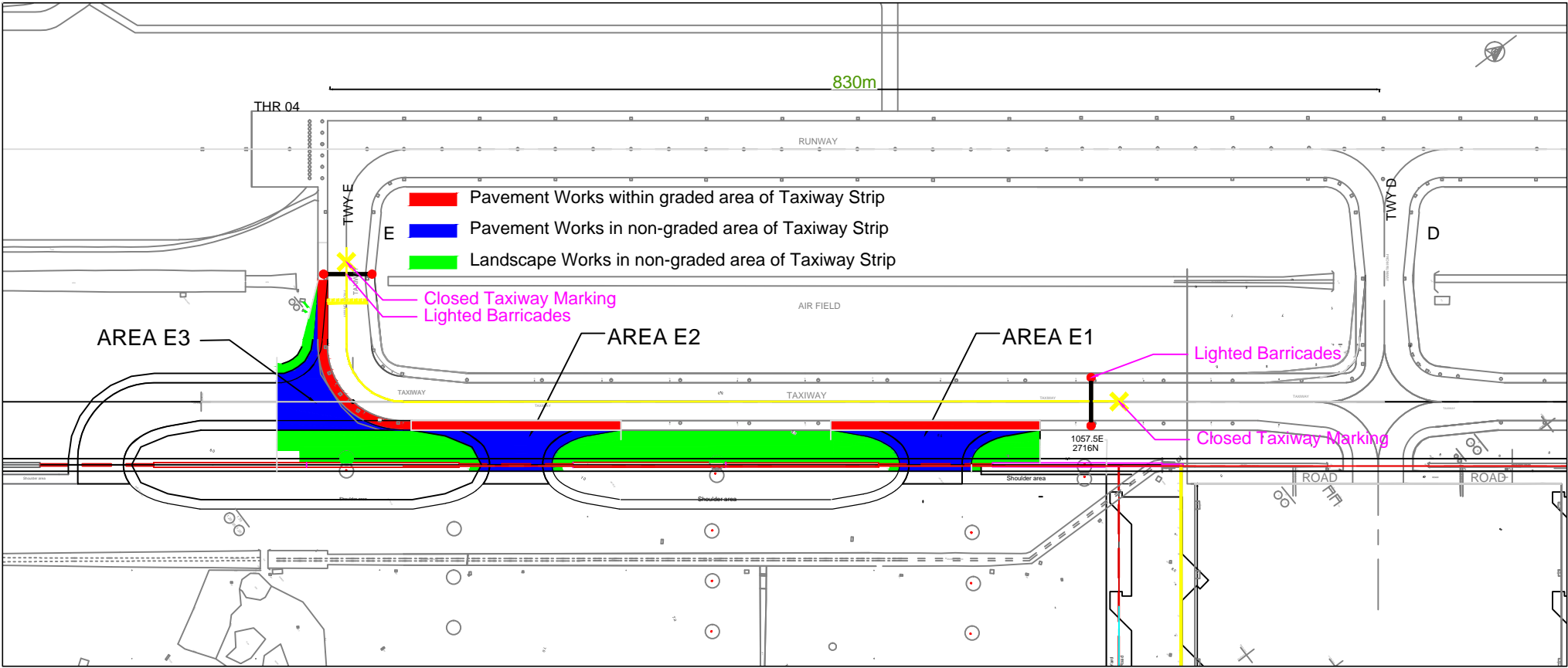
- 9.1 Air Traffic Control Tower,
Bandaranaike Intl. Airport , Katunayake, Sri Lanka.
Tel: +94-11-2252455 ,+94-11-2264220, +94-11-2264221, +94-11-22524222
E-mail : kishanthanimalaratnesatc.ans@airport.lk
- 9.2 Aeronautical Information Services,
Bandaranaike Intl. Airport , Katunayake, Sri Lanka.
Tel: +94-11-2264203, +94-11-2264240
E-mail:aishq@airport.lk

10 Cancellation

- 10.1 This AIP SUP shall become effective WEF 0430 UTC, 23rd April 2019 and shall remain current until 1800 UTC, 15th October 2019.

H.M.C NIMALSIRI
DIRECTOR GENERAL OF CIVIL AVIATION & CEO
CIVIL AVIATION AUTHORITY OF SRI LANKA.

CONSTRUCTION AREA



CONSTRUCTION AREA

